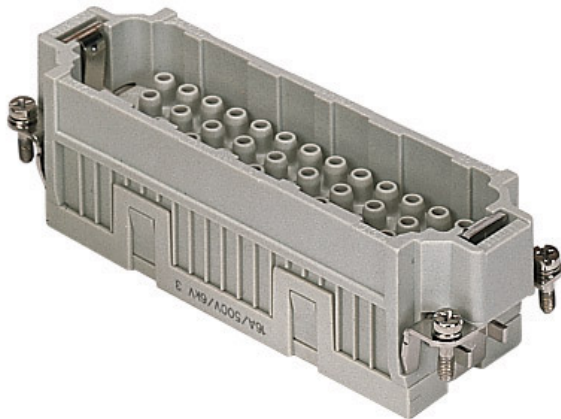


Part number


# CQEM 46 N



## Brief description:

male insert, 92 poles + PE (46 poles + PE, No. 47 - 92), crimp connections, 16A 500V, 6kV, 3, size "104.62", CLASS insert series

### Product description

Model	male insert
Version	crimp connections
Series	CQE
Product type	for male contacts 16A
Family	CLASS inserts
Size	size "104.62"
N. of poles	92 poles +  (2 inserts)


### Technical data

Current	16 A (A.C. and D.C.)
Voltage	500 V
Rated impulse withstand voltage	6kV
Pollution degree	3
Operating temperature range (min, max)	-40°C ... +125°C
Mating cycles	≥ 500
IP degree of protection	IP20 without enclosure, IP65/IP66 with enclosure
PE wire cross-section	0,14 - 4 mm <sup>2</sup> ; AWG 20 - 12

### Further technical details

Characteristics according to EN 61984	16A 500V 6kV 3; 16A 830V 8kV 2
Insulation resistance	≥ 10 GΩ
Rated voltage according to UL/CSA	600V
UL 94 flammability rating	V-0
Weight	74,00 g

### Approvals / Standards

Reference standard	EN 61984 (2001-11)
Quality mark	 , EAC
Conformity	CQC, CE

### General ordering information

EAN13 code	8015747037266
Tariff number	85369095
Country of origin	Made in EU (IT)
ETIM classification	EC000438

### Packaging Information

Sub-packaging weight	0,37 kg
Sub-packaging description	Carton
Sub-packaging quantity	5 Pcs
Sub-packaging EAN barcode	8015747037273

Part number

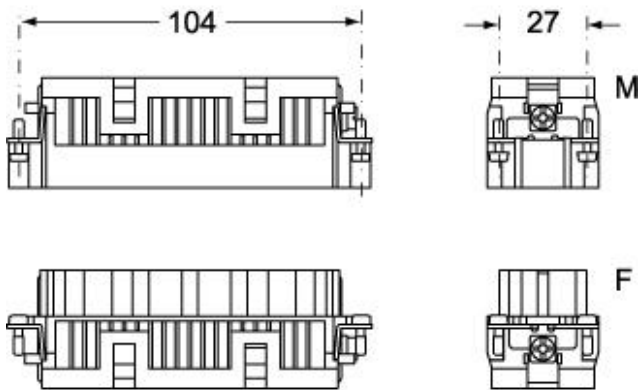
# CQEM 46 N



Catalogue drawings

Catalogue drawings

## CQEM 46



## CQEF 46

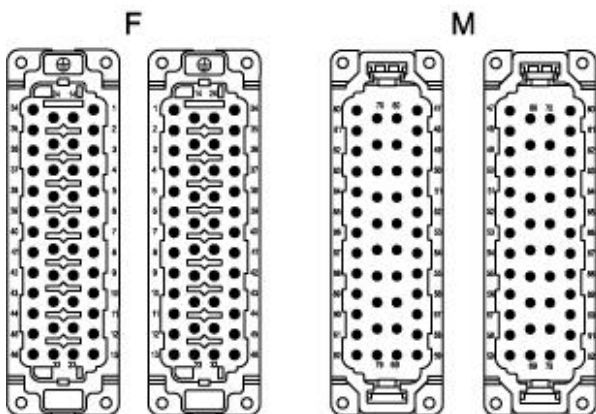
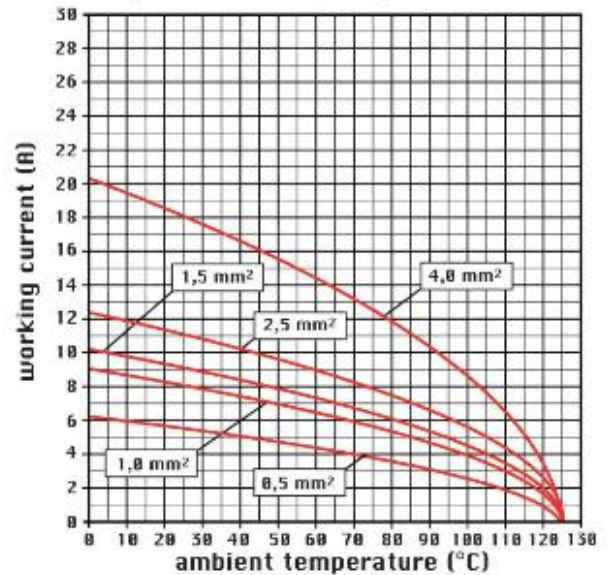


diagram CQE 46 and 92 poles



## Notes

CQEF/M 46 N inserts:

- characteristics according to EN 61984:  
(16A 500V 6kV 3)  
(16A 830V) 8kV 2)
- rated voltage according to UL/CSA: 600V
- insulation resistance: > 10 GOhm
- ambient temperature limit: -40 °C ... +125 °C
- are made of self-extinguishing thermoplastic resin  
UL 94 V0
- mechanical life: > 500 cycles
- contact resistance: < 1 mOhm
- for contact crimping instructions, please see the crimping tool  
section (16A contacts, CCF, CCM and CC...AN series) .
- enclosures: size "104.62":  
C-TYPE IP65/IP66  
C7 IP67 stainless steel lever

- V-TYPE IP65/IP66  
stainless steel lever
- T-TYPE IP65 insulating  
JEL zinc-plated steel lever
- BIG hoods  
W-TYPE aggressive environments  
EMC  
central lever  
IP68  
panel supports: page:COB